

# Welcome!

Thank you for booking at Palalma ,  
brought to you by Samson Waters

Name of Building: Palalma

Unit Number: 23

Wi-Fi : palama23

Password: Welcomehome

Location: [Push here for Google location](#)



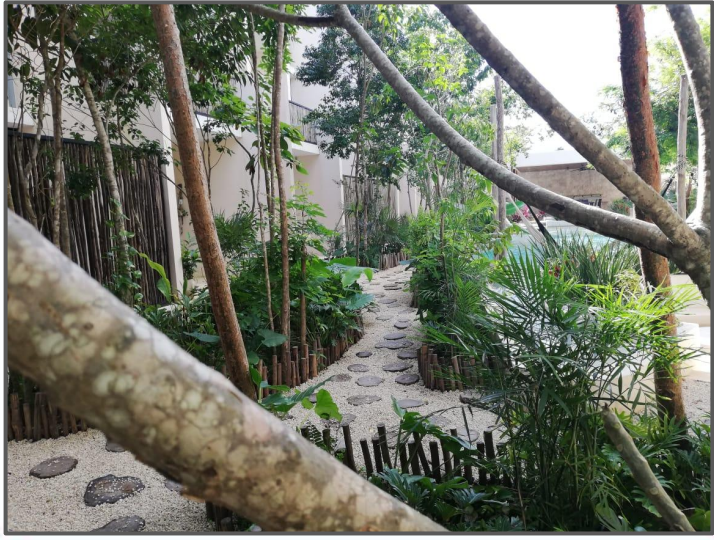
Samson  
Waters  
Vacation Rentals



Welcome to Palalma! Please follow these simple instructions for a smooth check in.



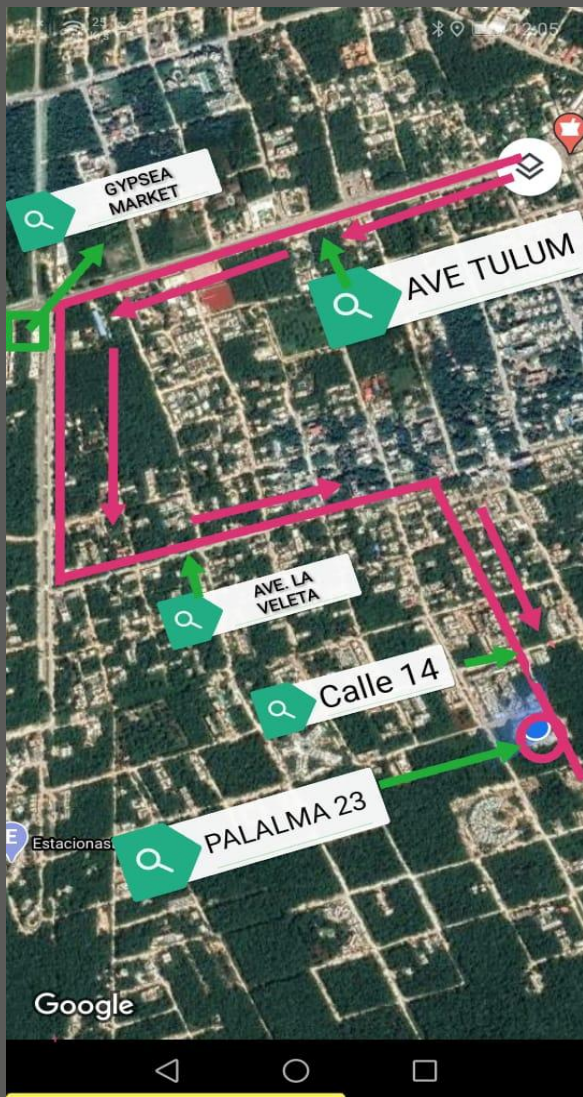
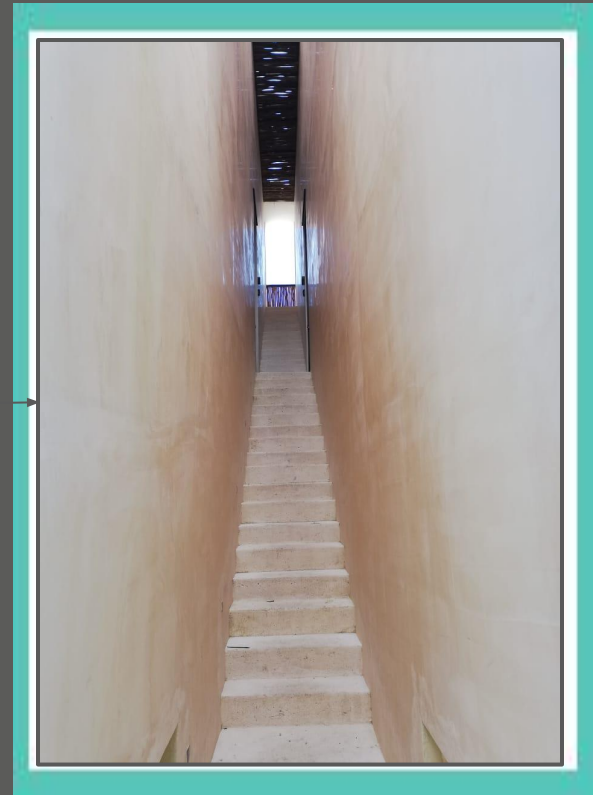
This is the entrance of Palalma, make sure to stop at the reception to sign in.



When leaving the reception, you will arrive at the common area. Continue to walk along the path until to see the second staircase.

Head up the staircase to the second floor. The first door on your left hand side is unit 23.

The keys to the door are located in the lockbox. The code will be provide one day prior to check in.



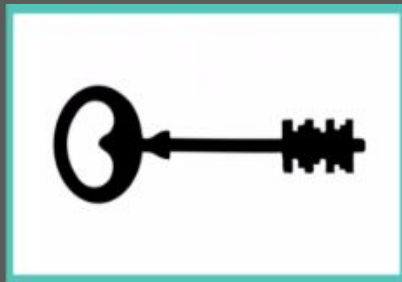
If you need some extra help locating Palalma, we have added a map!

Use the Gypsea Market on the map as reference, from there just follow the pink arrows on the map to arrive to the property



### PARKING

If you've driven a car, there is one parking space available



### KEYS

The keys to your unit are found in the lock box located next to your door. The code will be provided one day prior to arrival

Please let us know if there's anything we can do to make your stay with us a wonderful, memorable stay. Tours, family excursions, private chefs are all available to be booked through me, your concierge.



Akumal • Mérida • Playa del Carmen • Puerto Vallarta • Tulum

*Enjoy your stay!*